

The Waysafe 550 puts the mask on the balance not on the operator.

# Waysafe BH550

## Balance Hood

The BH550 (previously WS110) is a dual purpose extraction hood that protects personnel from nuisance media powders and also protects the balance from air turbulence.

The standalone unit is designed to easily fit onto most bench tops and is ideally suited for those in-between applications which are too small to necessitate a fume cupboard but benefit from improved containment.

The unit is available in two variations. One for top pan balances and the other for analytical. Both types come flat packed and are very easy to assemble.

The BH550 is an ideal addition to any laboratory and has very little maintenance or running costs.

- Ductless - air is filtered and clean air circulated back into the workplace
- Waysafe 200 series E10 EPA filtration as standard
- Upgrade to H13 HEPA filter (99.95% efficient) available
- All filters tested and certified to EN1822
- Easy benchtop installation
- Low maintenance
- Low (20m<sup>3</sup>/h) air flow, can be user configured
- Fast global delivery
- Protects operators
- Perfect for media weighing applications
- Removable front panel for easy access.
- Made to order at our factory in the UK

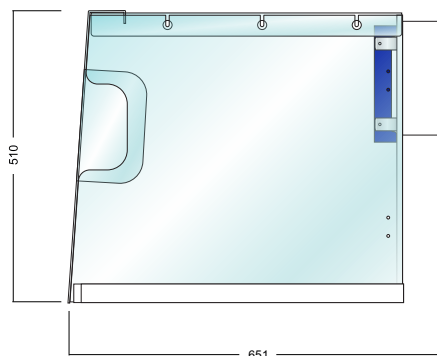
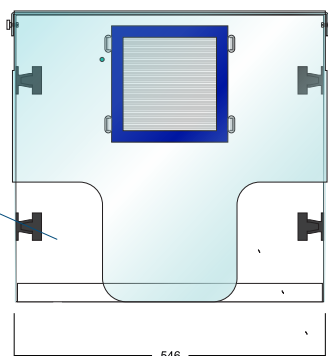
# Technical Specification

## Waysafe BH550

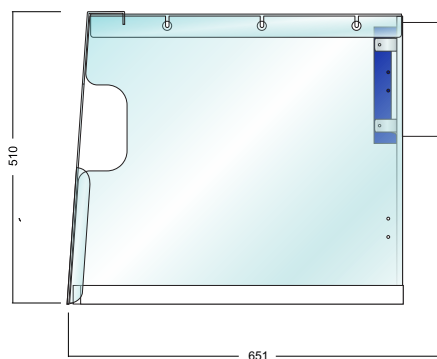
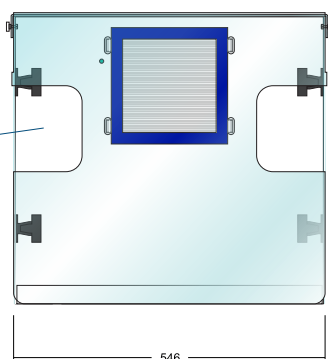
Front

Side

BH550/A - to suit analytical balances  
access ports at lower level



BH550/T - to suit top pan balances  
access ports at mid level



### Technical Specification

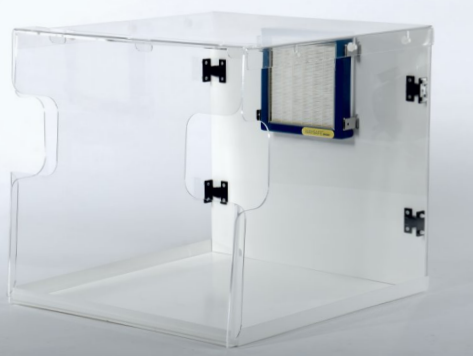
<b>Electrical</b>	230VAC 35w, meets LVD and is CE Marked (120VAC available)
<b>Air Speed</b>	Non-turbulant constant flow set at 20m <sup>3</sup> /h, but can be user configured to suit requirements
<b>External Dimensions</b>	Height 500mm, depth 651mm, width 550mm
<b>Filter</b>	Waysafe '200 series' filter housing
<b>Base tray</b>	White vacuum formed base tray
<b>Weight</b>	8.9kg with standard E10 filter

### Material Specification

<b>Base</b>	High Impact Polystyrene
<b>Glazing</b>	Cast Acrylic Glazing
<b>Backpanel</b>	10mm Food Grade PVC
<b>Filter Frame</b>	Powder Coated Aluminium Frame
<b>Ancillaries</b>	Durable Polycarbonate Hinges

### Options

<b>Filter</b>	Choice of E10 EPA or H13 HEPA filtration tested and certified to EN1822
<b>Configuration</b>	To suit top pan or analytical balances
<b>Hours Run Meter</b>	Electro-mechanical, non-resettable run meter for filter and service monitoring





# WolfLabs

**Pricing on any accessories shown can be found by keying the part number into the search box on our website.**

The specifications listed in this brochure are subject to change by the manufacturer and therefore cannot be guaranteed to be correct. If there are aspects of the specification that must be guaranteed, please provide these to our sales team so that details can be confirmed.

**[www.wolflabs.co.uk](http://www.wolflabs.co.uk)**

**Tel : 01759 301142**

**Fax : 01759 301143**

**[sales@wolflabs.co.uk](mailto:sales@wolflabs.co.uk)**

Please contact us if this literature doesn't answer all your questions.